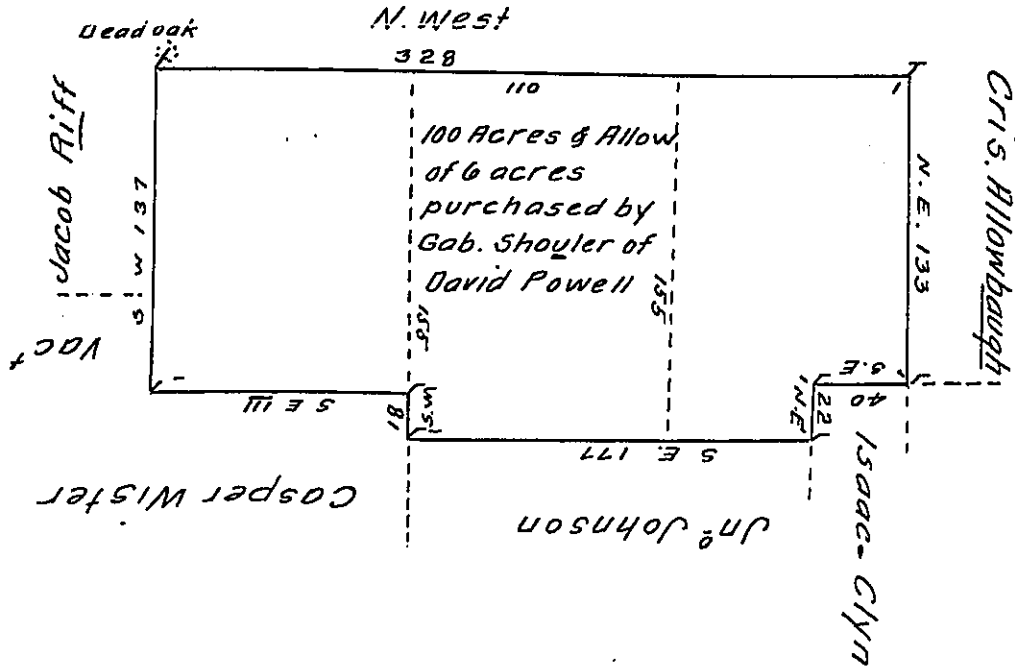


Hans Rieffs land



Surveyed on the 5th day of October 1733 To Gabriel Shouler a Tract of Land Situate in Township of Skippack in the County of Philad^a. Begining at a Dead Black Oak, thence by Vacant land & Land of Hans Rieff North West three hundred & twenty Eight perches to a Post, thence by land of Christian Allowback North East one hundred & thirty three perches to a post, thence by land of Isaac Clyn South East forty perches to a post, thence by the s^d Clyn's land North East twenty two Perches to a post, thence South East by John Johnsons land one hundred & Seventy Seven perches to a post. Thence South West by land^{late} of Joseph Jones Now Casper Wister's Eighteen perches to a post, thence by e^sd land South East one hundred & ten perches to a post, thence by Vacant land South West thirty nine perches & by land late of Jacob Rieff Ninety Eight Perches to ye Place of Begining. Containing Two hundred & Eighty Two Acres with Usual Allowance.

Nich^o Scull. —

155
110
1550
155
1705 0/106
1. 9

IN TESTIMONY that the above is a copy of the original remaining on file in the Department of Internal Affairs of Pennsylvania, made conformably to an Act of Assembly approved the 16th day of February, 1833, I have hereunto set my Hand and caused the Seal of said Department to be affixed at Harrisburg, this seventh day of January 1910.

Henry Houck
Secretary of Internal Affairs.